

ROTARY PROGRAMS FOR YOUNG LEADERS

# EMPOWERING *next* GENERATIONS

---

## PELS 2026

Tiger Palace Resort, Bhairahawa  
2 May / Saturday

---



### RTN. RAJ SHRESTHA

Rotary E-Club of District 3292 Nepal

Chair, District Publication and GML Sub-Committee 2023-24  
Club President 2024-25  
Chair, District Media Relations Sub-Committee 2025-26  
Chair, District Information Technology Committee 2026-27

Rotary   
District 3292

CREATE  
LASTING  
IMPACT



Is there anyone in the hall, who wants  
**Rotary to Grow Young instead of Growing Old?**



Youths are **Flexible.**

Youths are **Fast.**

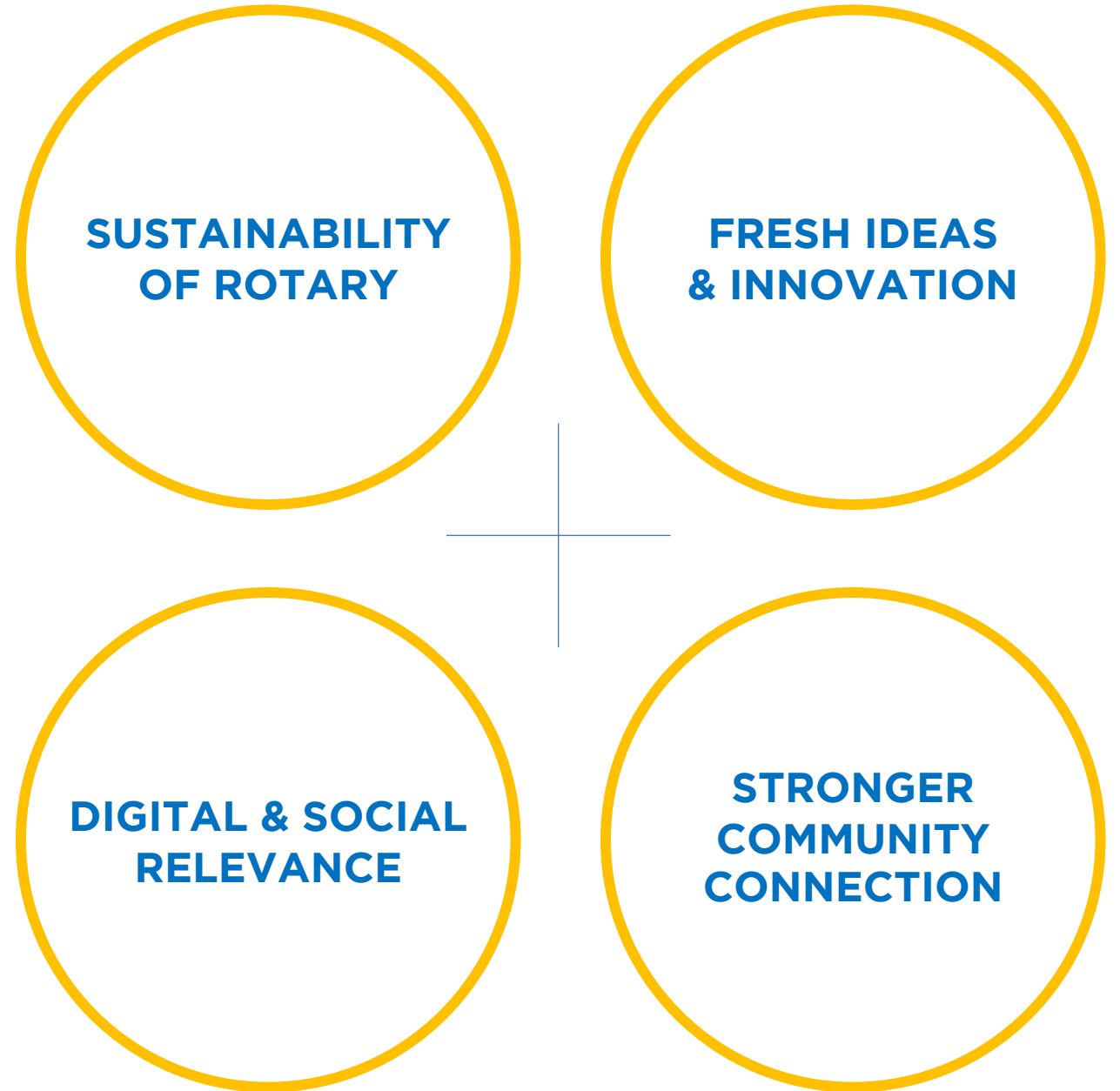
Youths are **Risk Takers.**

Youths are **Collaborative.**

Youths are **Sensitive.**

Let's Grow Young with **Rotary Programs?**

Why?





7 - 12 Years



7 - 12 Years

Interact



12- 18 Years



7 - 12 Years

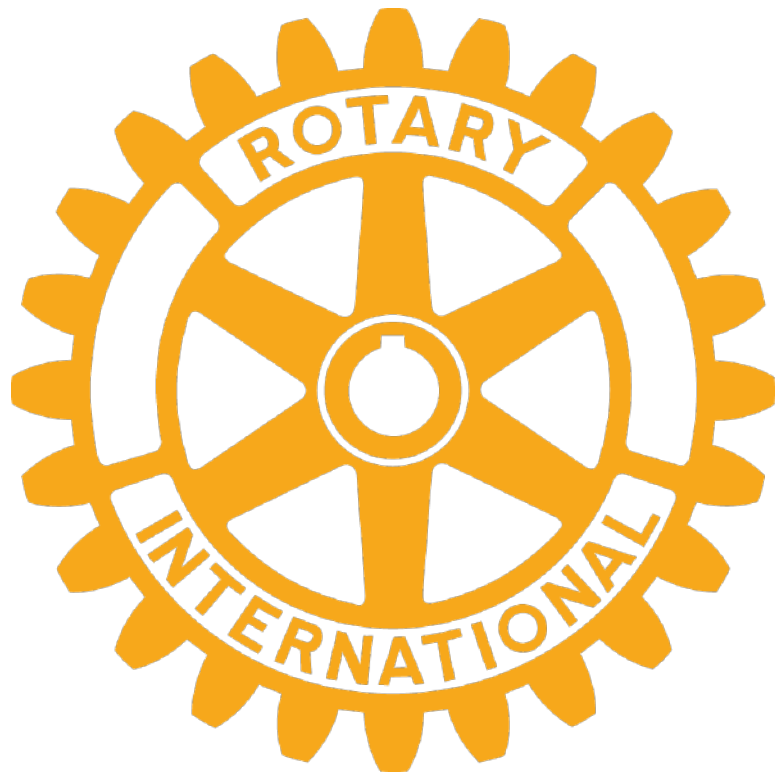


12- 18 Years

Rotaract



18+Years





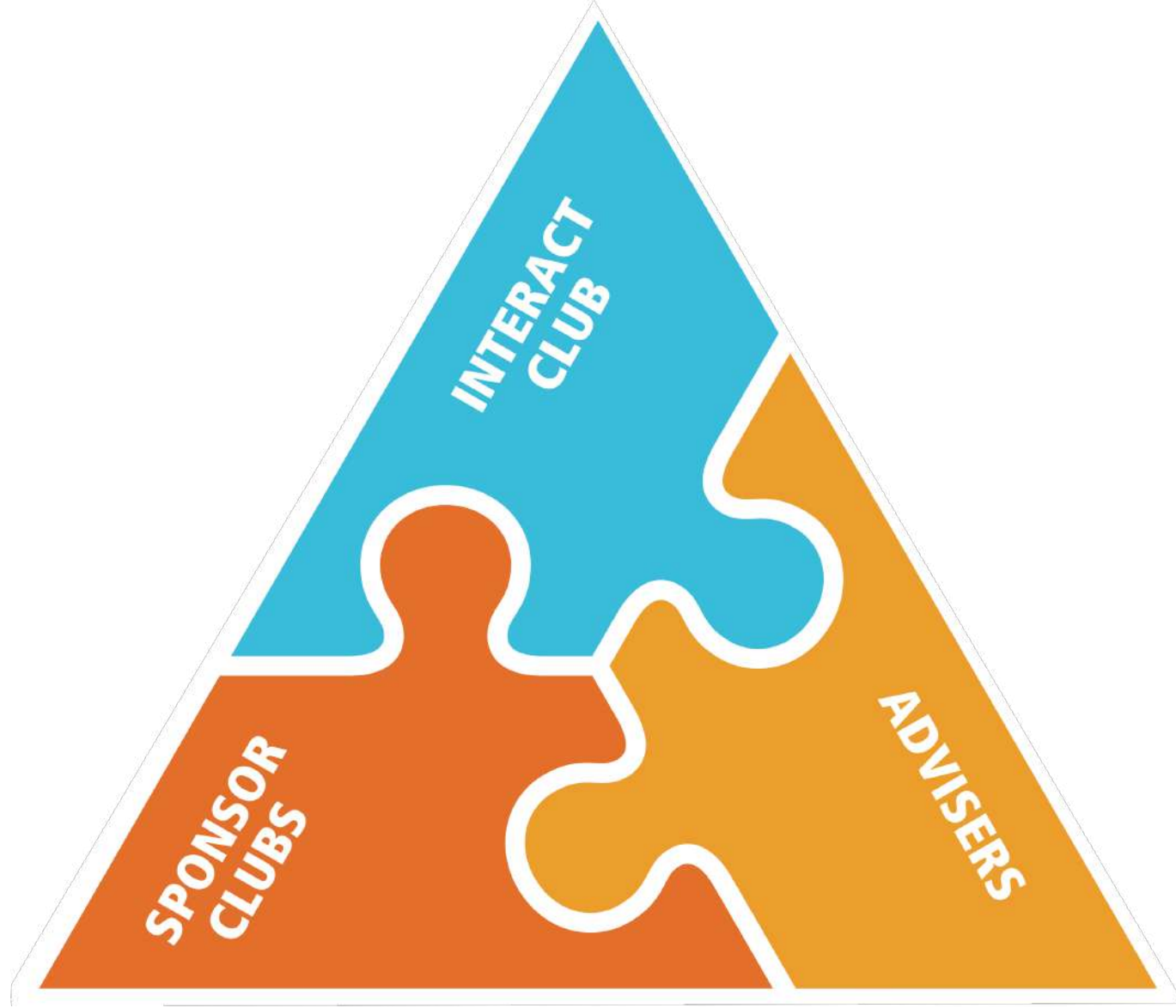
- 7 – 12 Years
- Rotary Families
- Early Leadership Practice
- Community Service
- Rotary Values







- 12 – 18 Years
- School or Community Based Clubs
- Sponsored by Rotaract or Rotary Club
- 144 Interact Clubs & 3,400+ Interactors in ID3292
- 100+ Countries, 15k Clubs & 300k Interactors, Globally
- Led by District Interact Representative (DIR)
- Club BOD and Officers
- Standard Club Constitution, ByLaws & Code of Policies
- At Least 2 Service Projects in a Year





**TAKE  
THE LEAD**

**LEARN THE  
VALUE OF SERVICE**

**BECOME  
GLOBAL CITIZENS**

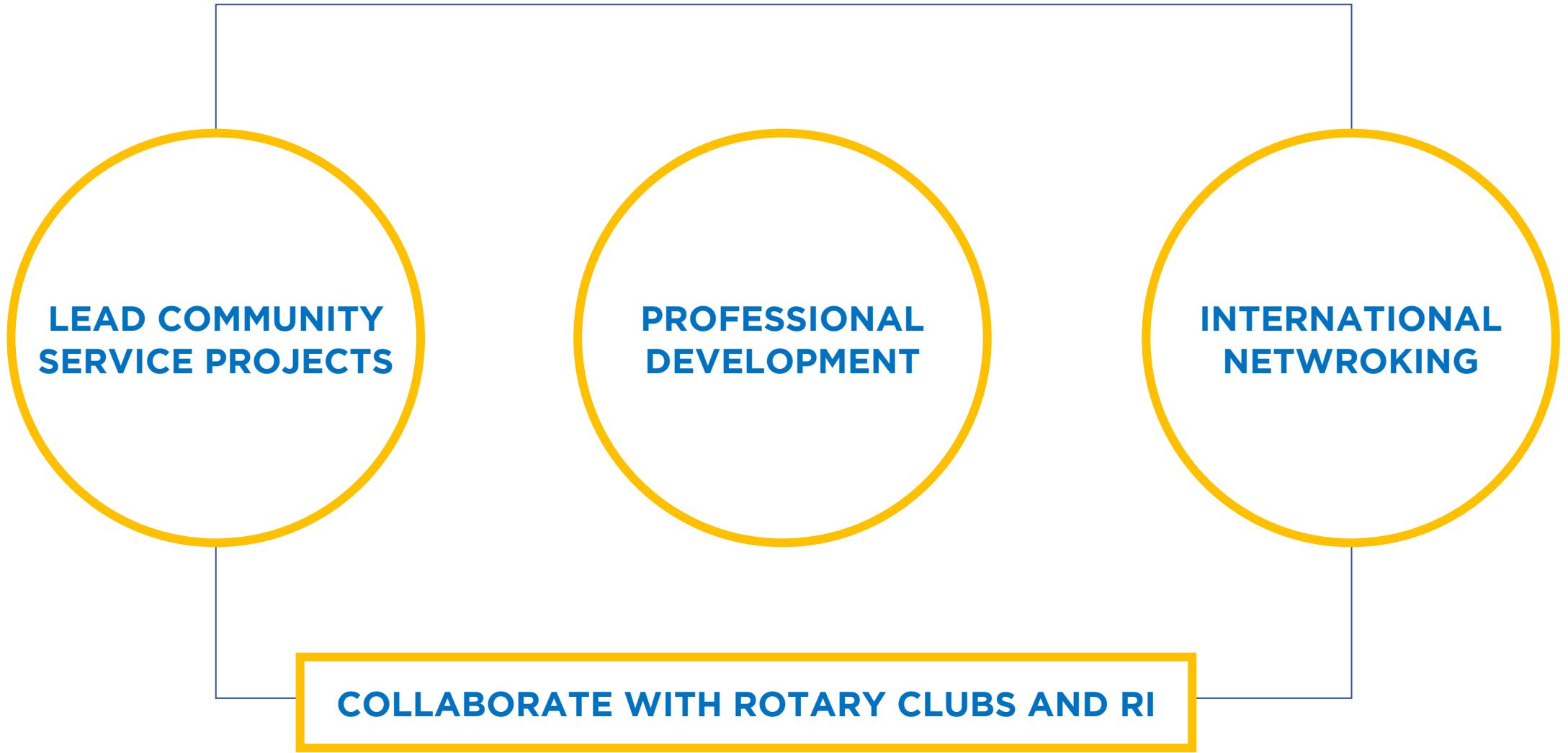
# Positive Youth Development







- 18+ Years
- Official Membership Type of Rotary
- Sponsored by Rotary Club
- 180+ Rotaract Clubs & 6,000+ Rotaractors in RD3292
- 180+ Countries, 10k Clubs & 200k Rotaractors, Globally
- Led by District Rotaract Representative (DRR)
- Club BOD and Officers
- Standard Club Constitution, ByLaws & Code of Policies



**LEAD COMMUNITY  
SERVICE PROJECTS**

**PROFESSIONAL  
DEVELOPMENT**

**INTERNATIONAL  
NETWORKING**

**COLLABORATE WITH ROTARY CLUBS AND RI**

# Best Practices



HIGH-PERFORMING ROTARY-ROTARACT RELATIONSHIPS

**Joint service  
projects**

**Rotaractors  
invited to  
Rotary  
meetings**

**Mentorship  
programs**

**Transition  
pathways to  
Rotary  
membership**

# Worst Practices

COMMON MISTAKES **X**

**Treat Rotaract  
as subordinate**

**Engage only  
during events**

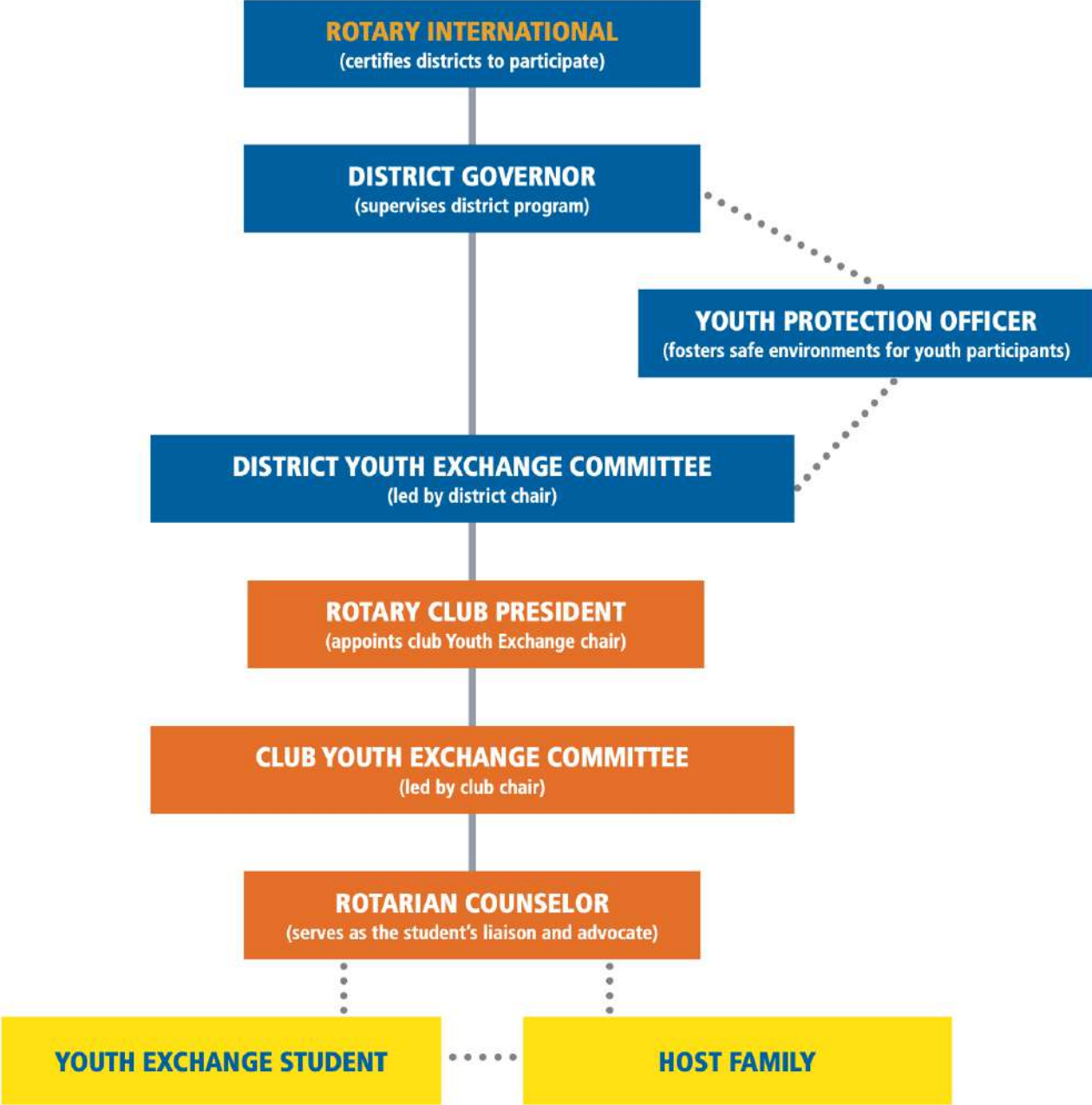
RotaKids → Interact → Rotaract → Rotary

How many **Rotaractors transitioned** into your club?



# RYE

Rotary  | rotary  
youth  
exchange







An intensive leadership experience where participants build skills, network, and grow personally

- 14 - 30 Years of Age
- Rotary's most impactful youth leadership program
- 1 -7 Days Close Camp
- Leadership & decision-making
- Discover their potential
- Participants are nominated by Rotary clubs
- Mandatory youth protection policies
- Sponsor at least 1-2 RYLA participants annually







How many RYLA participants are you sending?

NGSE



- 18 - 30 Years of Age
- Short-term international exchange Program
- Designed for young adults to gain professional, cultural, and service experience abroad
- Duration: 3 weeks to 3 months
- Professional internships / Cultural exchange / Service-based experiences
- Organized by Rotary districts between partner countries



**ROTARY PEACE  
FELLOWSHIP**



- One of the most prestigious programs
- Develop global leaders in peacebuilding and conflict resolution
- Funded through The Rotary Foundation
- Master's Degree Program
- Offered by top global institutions
- Rotary's highest-level investment in global leadership





- Community members becoming partners in Rotary service.
- Youth and adults (no strict age limit)
- Empower communities to solve their own problems
- Promote sustainable development
- Extend Rotary's reach beyond membership
- Act as a bridge to youth programs

How many of your projects **truly continue after Rotary leaves?**





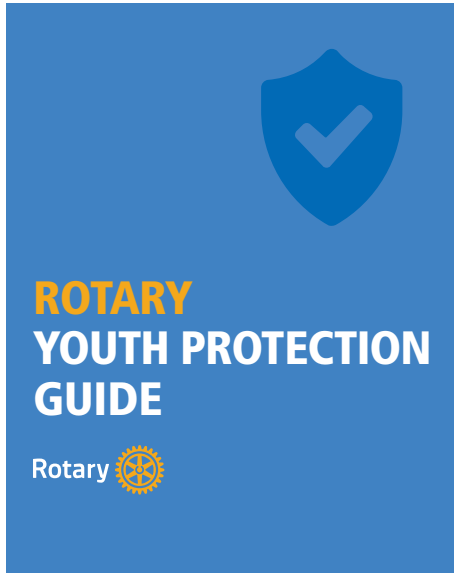


**ROTARY**  
**YOUTH PROTECTION**  
**GUIDE**





Rotary International strives to create and maintain a **safe environment for all youth** who participate in Rotary activities. To the best of their ability, Rotarians, Rotarians' spouses and partners, and other volunteers must safeguard the children and young people with whom they come into contact and **protect them from physical, sexual, and psychological abuse.**



- Written Application
- Screening & Selection
- Reference Checks
- Criminal Background and Criminal Record Checks
- Home Visits
- Physical / Psychological Safety
- Neglect / Exclusion
- Sexual / Non-Sexual Abuse
- Crisis Management; Accidents, Violence, Natural Disasters, Political Unrest, Outbreak of Illness, etc.
- Report of Abuse / Harassment

Every young person has **the right to feel safe** and **be safe**.



No exceptions.  
Immediate action  
is required.





**DEI**



# Diversity

of people,  
perspectives



# Equity

in policy, practice  
& position

Print and Graphics  
**Scholarship  
Foundation**



# Inclusion

via power, voice &  
organizational culture

# DATE TO REMEMBER

**May:**  
Youth Service Month

**Rotaract Week:**  
Includes 13 March  
(Monday to Sunday)





**Rtn. Sudeep Baniya**

Chair – Rotary Young  
Leadership Award (RYLA)  
Sub-Committee 2026-27



**Rtn. Pabina Khadka**

Chair – Rotary Youth  
Exchange Sub-Committee  
2026-27



**Rtn. Arjun Shrestha**

Chair – District Interact  
Subcommittee 2026-27



**Rtn. Krishna Pandey**

Chair – District Rotaract  
Subcommittee 2026-27

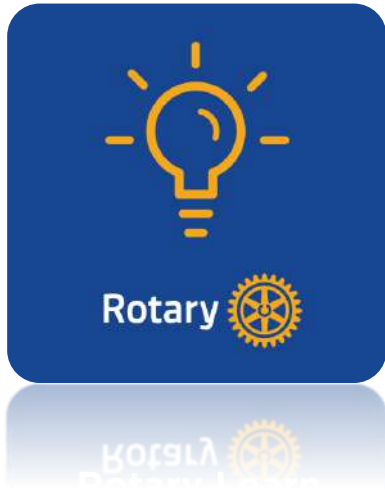
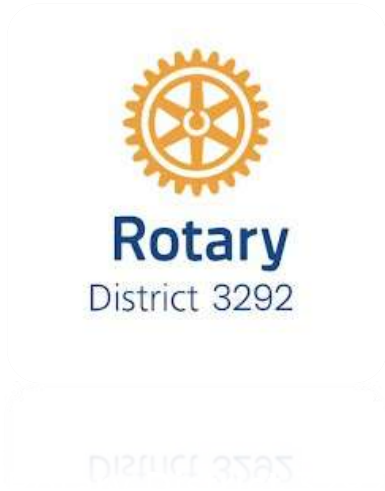


<https://my.rotary.org/>



<https://rotarydistrict3292.org.np/>





**THANK**  
*you.*



SCAN QR TO  
DOWNLOAD  
RESOURCES

**RTN. RAJ SHRESTHA**

Chair, District Information Technology Committee 2026-27



# *group*ACTIVITY

## TASK ~ 7 min

Identify at least three ways you can integrate programs for young leaders into your club.

Discuss potential opportunities and challenges in getting club members to participate.

## GROUP ~ 2 min each

Group Representative  
Presentation